



PUPIL PREMIUM TIERED MODEL

Branscombe Church of England Primary School.

1 Teaching

Quality first teaching supported by regular CPD for staff.

Rigorous and methodical approach to teaching of basic skills: number bonds/times tables/phonics/grammar. Including online resources such as TT Rock Stars, Spelling Shed and Bug Club.

Whole school focus on vocabulary across subjects, including words of the week, visual supports, explicit vocabulary teaching, role play.

Mastery approach in maths supported by fluency and imagery.

Learning Journeys to support sequences of lessons.

Positive learning behaviours promoted within lessons through learning behaviour animals.

Termly PPG case studies to analyse the achievement of PPG children.

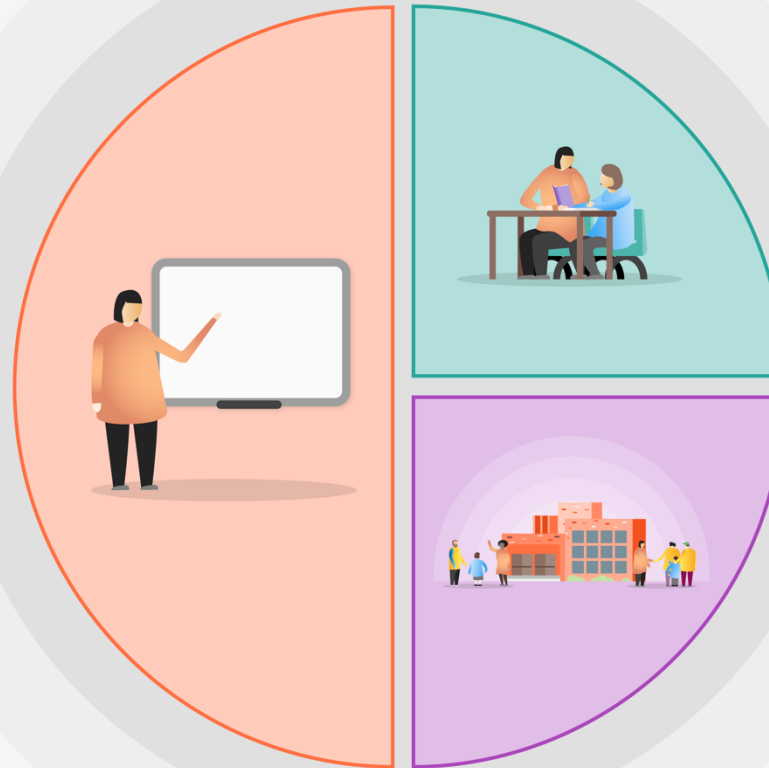
Emphasis on reading culture; use of reading scheme, class readers, guided reading and online resources- Bug Club and Spelling Shed.

Daily dashboard to promote discussion around current affairs, special occasions and curriculum such as geography and British Values.

Role play areas in KS1 and KS2(DEN)

Visitors and visits to support the curriculum.

Philosophy 4 Children enquiries to promote questions and challenge through discussion.



2 Targeted academic support

Termly teacher pupil progress meetings to identify need.

Targeted booster sessions in Years 6.

Bespoke interventions where required in Literacy and Maths delivered by a teacher and TAs.

Tier 2 and 3 Vocabulary Pre teaching.

Small group teaching with teacher and TAs.

3 Wider strategies

Broad and engaging thematic curriculum.

School counsellor to support mental health.

Wide range of visitors, visits and clubs to support physical wellbeing and the curriculum.

'10 a day' activities to support mental health including feelings 'barometer' to share feelings.

Weekly enrichment activities.

Lunchtime sports club ensuring active children.

Class novel read in class 2.

Opportunities to take part in Youth Speak events.